

GUIDE TO UPDATE CLONER TPH

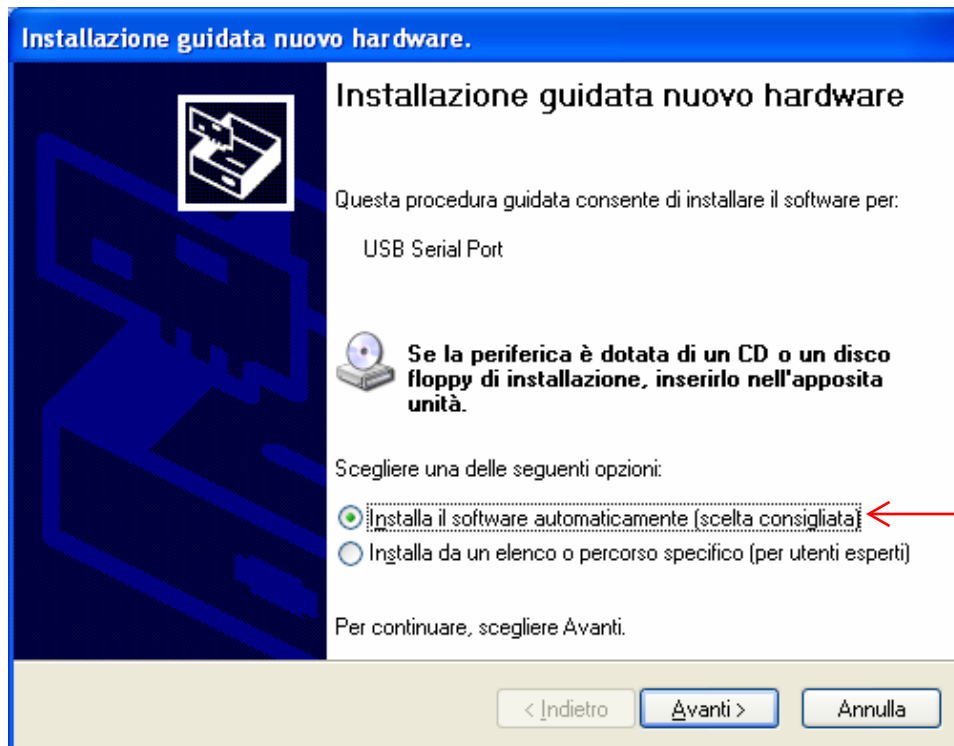
Switch on LS8 and connect it to PC via USB cable as in the hereunder picture



CL PORT

If it is the first time that you connect the machine to the PC you need to install drivers. Computer will recognize automatically a new device and it will opens “Installazione guidata nuovo hardware”

To proceed with the guided installation follow the next steps

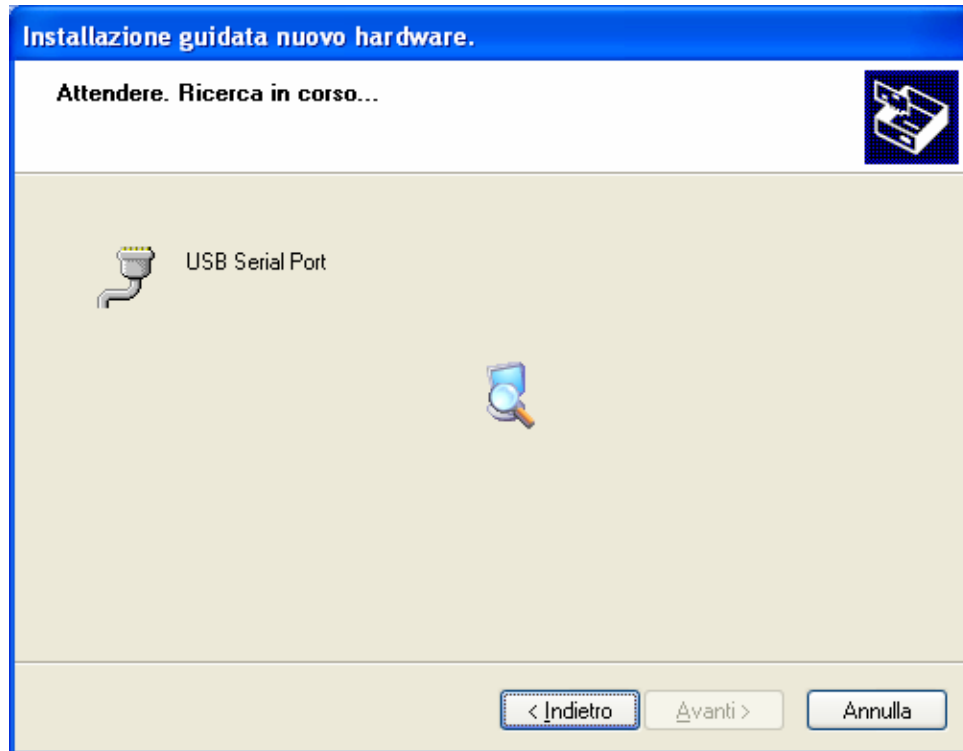


Choose “Installa automaticamente” and then “Avanti”.

ERREBI S.P.A.

Via Pianezze, 42-49
32040 CIBIANA DI CADORE (BL) - ITALY
Telefono: +39 0435 542500 Fax: +39 0435 542522
Società soggetta all'altrui attività di direzione e coordinamento

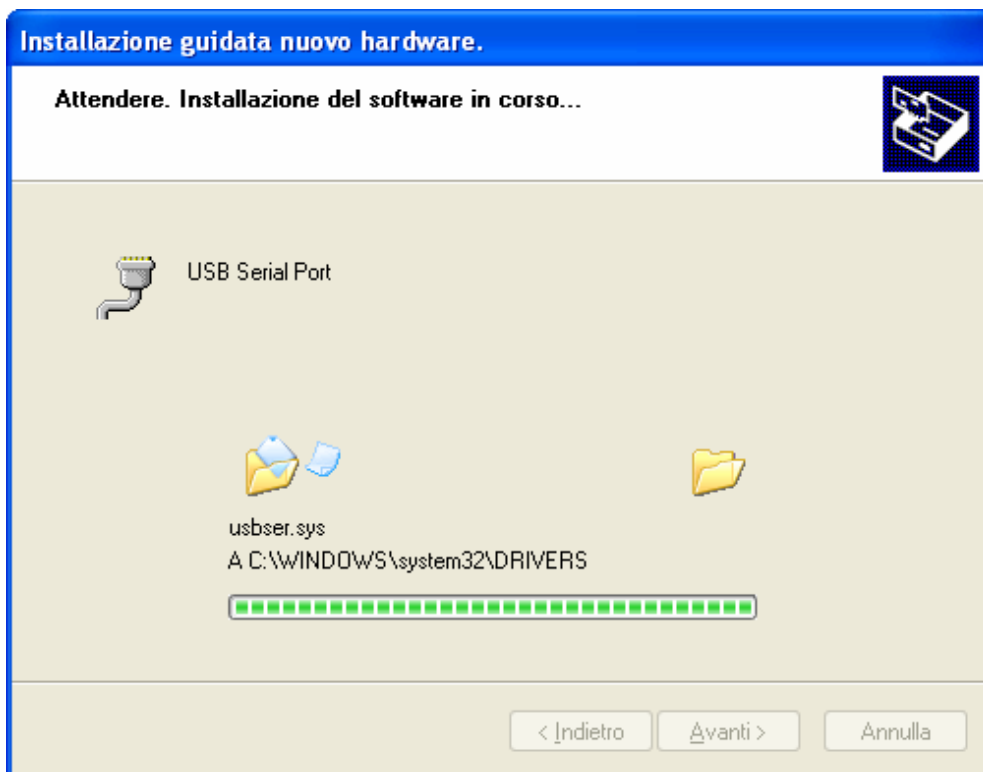
info@errebispa.com - www.errebispa.com
R.E.A. BL n. 18882 - Cap. Soc. € 1.150.000 i.v.
P. IVA - VAT / Cod. Fisc. / Reg. Imp. 00056710254



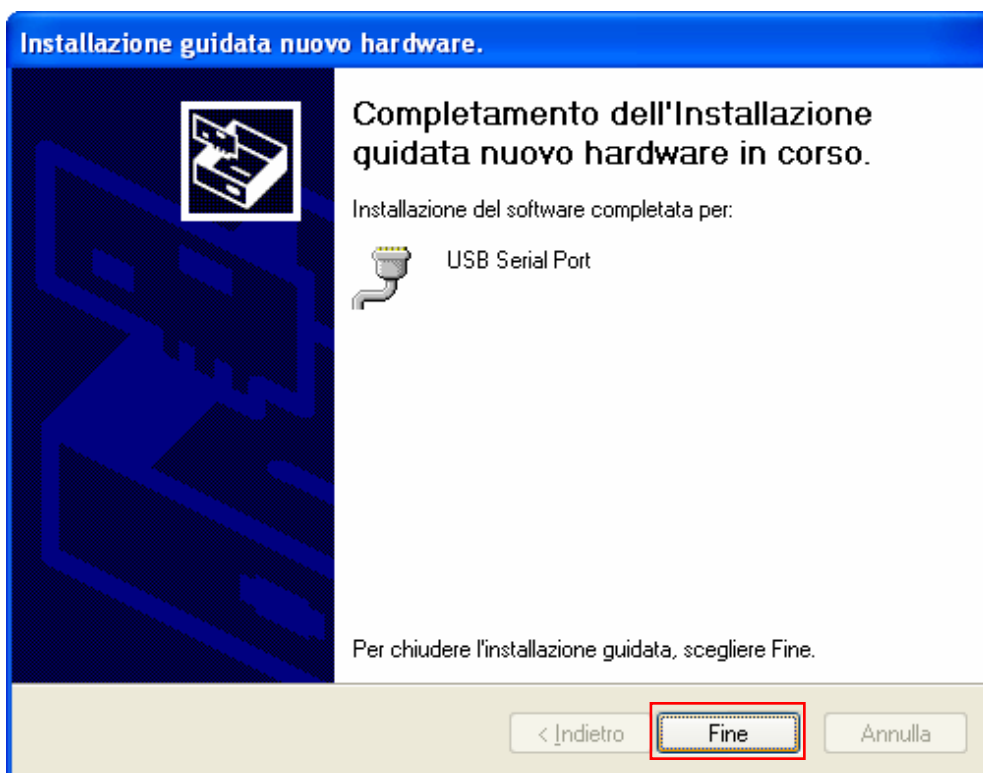
PC will search automatically the drivers



Click "Continua".



Automatic installation will continue



Drivers installation completed, click "Fine". The new device is now ready.

ERREBI S.P.A.

Via Pianezze, 42-49
32040 CIBIANA DI CADORE (BL) - ITALY
Telefono: +39 0435 542500 Fax: +39 0435 542522
Società soggetta all'altrui attività di direzione e coordinamento

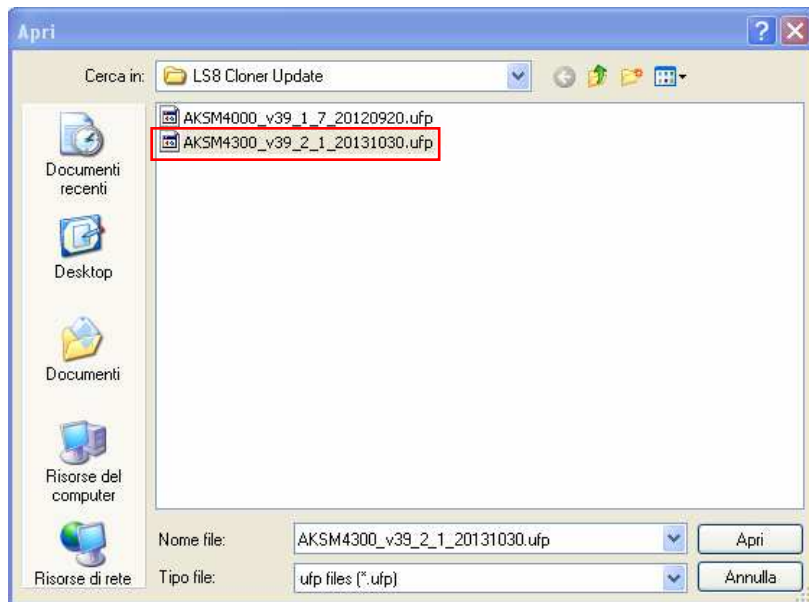
info@errebispa.com - www.errebispa.com
R.E.A. BL n. 18882 - Cap. Soc. € 1.150.000 i.v.
P. IVA - VAT / Cod. Fisc. / Reg. Imp. 00056710254

Once the drivers installation is done launch the software
ERREBI CLONER PROGRAMMER.

This software will appear on your desktop and it's automatically installed when you install the LS8



Select LS8 and click on Browse to select the file to send to the device



Inside the directory LS8 Cloner Update you can find the updating file:

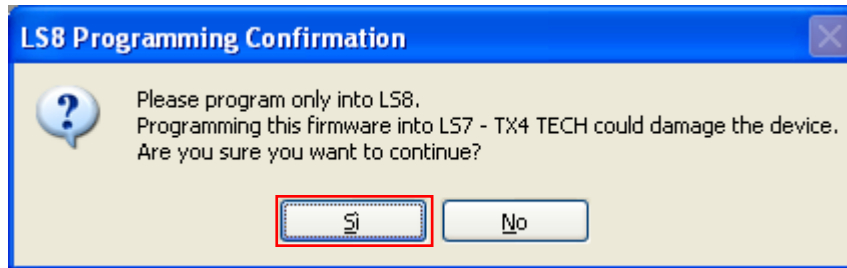


ERREBI S.P.A.

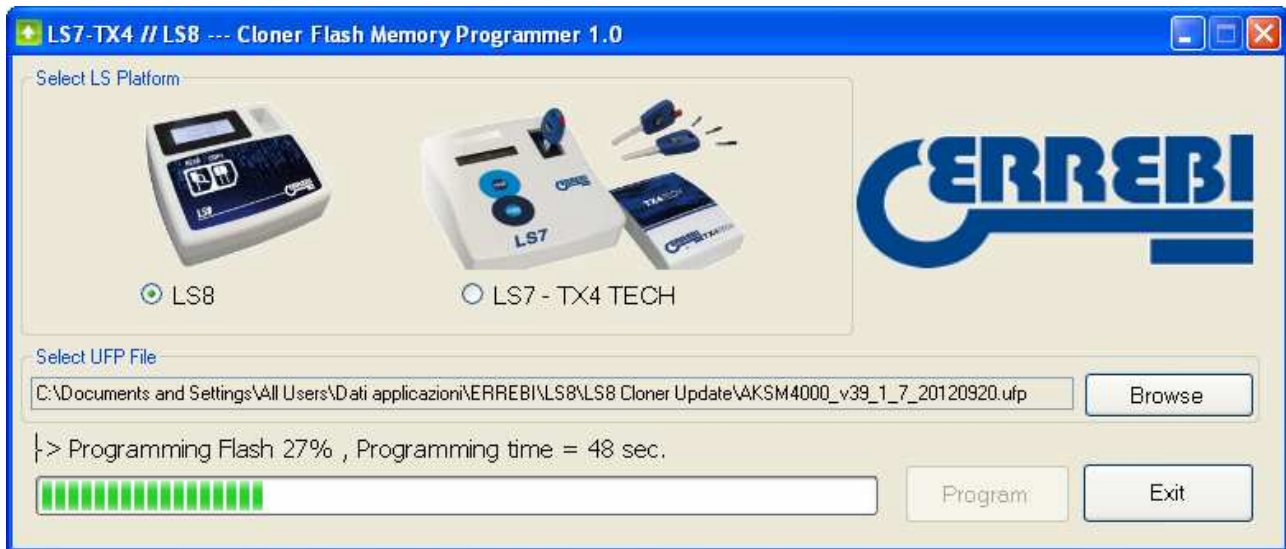
Via Pianezze, 42-49
32040 CIBIANA DI CADORE (BL) - ITALY
Telefono: +39 0435 542500 Fax: +39 0435 542522
Società soggetta all'altrui attività di direzione e coordinamento

info@errebispa.com - www.errebispa.com
R.E.A. BL n. 18882 - Cap. Soc. € 1.150.000 i.v.
P. IVA - VAT / Cod. Fisc. / Reg. Imp. 00056710254

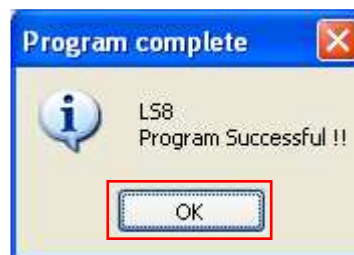
Proceed by selecting the file and then click on “Program”.



Click “Si” and wait for a few seconds, the updating doesn’t start immediately.



Then wait till the end of the process and relative message



Program has been succesfull sent to the device and update is done
Now device is updated, disconnect usb cable.